

# Cisco Integrated Services Routers 1941 Series Datasheet



**Router-Switch.com**  
Leading Network Hardware Supplier

## CONTENT

Overview .....	2
Appearance .....	2
Key Features and Benefits .....	3
Product Specifications .....	4
Basic Ordering Information.....	8
Additional Information .....	9
Where to Buy .....	9
Sources.....	9

### Contact Us

Tel: +1-626-239-8066 (USA) +852-3050-1066 / +852-3174-6166 /

+852-9795-4940 (Hong Kong)

Fax: +852-3050-1066 (Hong Kong)

Email: [cisco@router-switch.com](mailto:cisco@router-switch.com) (Sales Inquiries)

[ccie-support@router-switch.com](mailto:ccie-support@router-switch.com) (CCIE Technical Support)

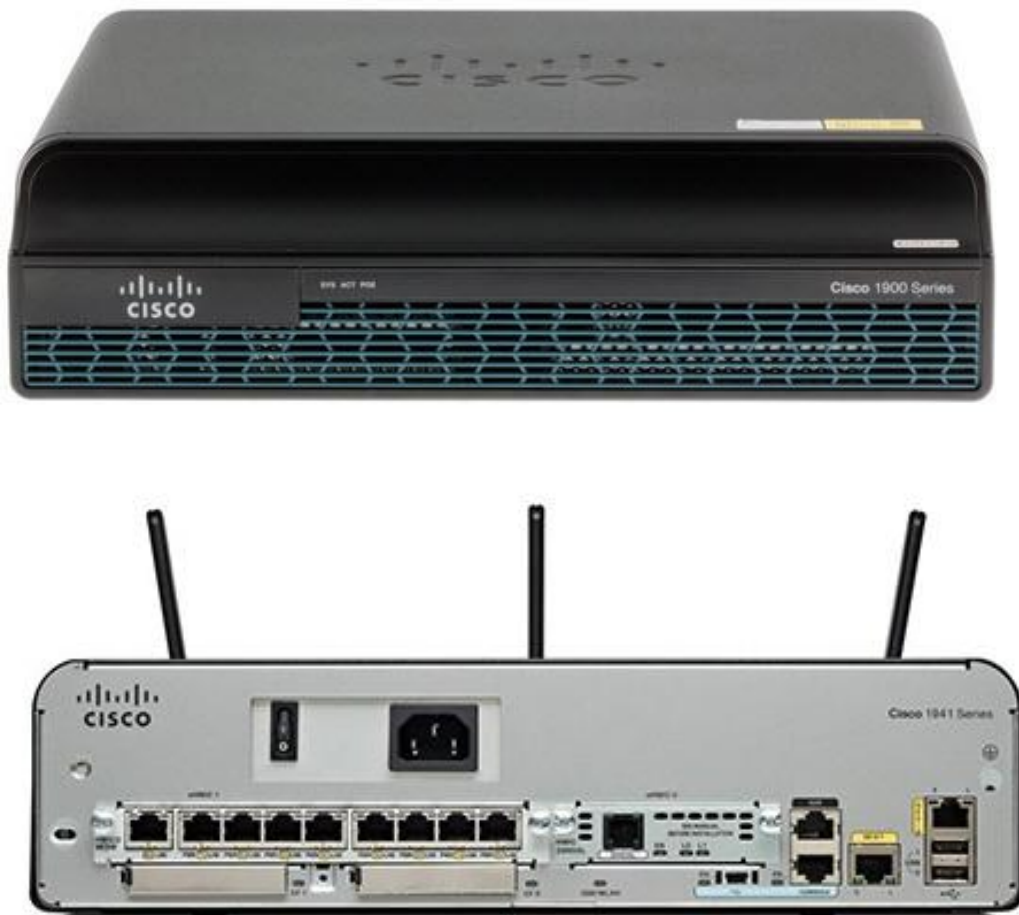
## OVERVIEW

Cisco® 1941 builds on the best-in-class offering of the existing Cisco 1841 Integrated Services Routers by offering 2 models - Cisco 1941 and Cisco 1941W. In addition to the support of a wide range of wireless and wired connectivity options supported on Cisco 1941 Series, Cisco 1941W offers integration of IEEE 802.11n access point which is backwards compatible with IEEE 802.11a/b/g access points.

All Cisco 1900 Series Integrated Services Routers offer embedded hardware encryption acceleration, optional firewall, intrusion prevention, and application services. In addition, the platforms support the industries widest range of wired and wireless connectivity options such as T1/E1, xDSL, 3G, 4G LTE, and GE.

## APPEARANCE

**Figure 1.** Cisco Routers 1941 Series



### Service Integration

- The Cisco 1941 Series offer increased levels of services integration with data, security, wireless, and mobility services enabling greater efficiencies cost savings.

#### Services on Demand

- A single Cisco IOS® Software Universal image is installed on each ISR G2. The Universal image contains all of the Cisco IOS technology sets which can be activated with a software license. This allows your business to quickly deploy advanced features without downloading a new IOS image. Additionally, larger default memory is included to support the new capabilities.
- The Cisco Services Ready Engine (SRE) enables a new operational model which allows you to reduce capital expenditures (CapEx) and deploy a variety of application services as needed on a single integrated compute services module.

### High Performance with Integrated Services

- The Cisco 1900 Series enables deployment in high speed WAN environments with concurrent services enabled up to 25 Mbps.
- Multi-Gigabit Fabric enables high bandwidth module to module communication without compromising routing performance.

### Network Agility

- Designed to address customer business requirements, Cisco 1941 Series with the modular architecture, offers performance range of modular interfaces and services as your network needs grow.
- Modular interfaces offer increased bandwidth, a diversity of connection options, and network resiliency.

### Energy Efficiency

- The Cisco 1941 Series architecture provides energy savings features that include the following:
- The Cisco 1900 Series offers intelligent power management and allows the customer to control power to the modules based on the time of day. Cisco EnergyWise technology will be supported in the future.

- Services integration and modularity on a single platform performing multiple functions, optimizes raw materials consumption and energy usage.
- Platform flexibility and ongoing development of both hardware and software capabilities lead to a longer product lifecycle, lowering all aspects of the total cost of ownership, including materials and energy use.
- High efficiency power supplies are provided with each platform.

### Investment Protection

- The Cisco 1941 Series maximizes investment protection by supporting:
- Reuse of a broad array of existing modules supported on the original Integrated Services Routers provides a lower cost of ownership.
- Rich set of Cisco IOS Software features carried forward from the original Integrated Services Routers and delivered in the universal image.

## PRODUCT SPECIFICATIONS OF CISCO ROUTERS 1941 SERIES

Services and Slot Density	
Embedded hardware-based crypto acceleration (IPSec)	Yes
Total Onboard Gigabit Ethernet 10/100/1000 WAN ports	2
RJ-45-Based Ports	2
SFP-Based Ports	0
SM Slots	0
Double-Wide SM Slots	0
EHWIC Slots	2
Double-wide EHWIC slots (use of a double-wide EHWIC slot will consume two EHWIC slots)	1
ISM Slots	1 (0 on the Cisco 1941W)
Memory (DDR2 Error Correction Code [ECC] ECC DRAM) - Default	512 MB

<b>Memory (DDR2 ECC DRAM) - Maximum</b>	2.0 GB
<b>Compact Flash (external) - Default</b>	slot 0: 256 MB slot 1: none
<b>Compact Flash (external) - Maximum</b>	slot 0: 4 GB slot 1: 4 GB
<b>External USB flash memory slots (Type A)</b>	2
<b>USB Console Port (Type B) (up to 115.2 kbps)</b>	1
<b>Serial Console Port (up to 115.2 kbps)</b>	1
<b>Serial Auxiliary Port (up to 115.2 kbps)</b>	1
<b>Power Supply Options</b>	AC, POE
<b>Redundant Power Supply Support</b>	No
<b>Power Specifications</b>	
<b>AC Input Voltage</b>	100-240 V ~
<b>AC Input Frequency</b>	47-63 Hz
<b>AC Input Current range AC Power Supply (Max) (Amps)</b>	1.5-0.6
<b>AC Input Surge Current</b>	<50 A
<b>Typical Power (No Modules)</b>	35 W
<b>Maximum Power capacity with AC power supply</b>	110 W
<b>Maximum Power capacity with PoE power supply (platform only)</b>	110 W
<b>Maximum PoE device power capacity with PoE power supply</b>	80 W
<b>Physical Specifications</b>	
<b>Dimensions (H x W x D)</b>	3.5 in x 13.5 in x 11.5 in
<b>Rack Height</b>	2 RU
<b>Rack-mount 19in. (48.3 cm) EIA</b>	Included

<b>Wall-mount (refer to installation guide for approved orientation)</b>	Yes
<b>Weight - with AC power supply (no modules)</b>	12 lbs
<b>Weight - with POE power supply (no modules)</b>	12.8 lbs
<b>Maximum Weight - Fully Configured</b>	14 lbs
<b>Airflow</b>	Front to Side
<b>Environmental Specifications</b>	
<b>Operating Condition</b>	
<b>Temperature - 5906 feet (1800 m) max. altitude</b>	0-40°C (32-104°F)
<b>Temperature - 9843 feet (3000 m) max. altitude</b>	0-25°C (32-77°F)
<b>Altitude</b>	3000 m (10000 ft)
<b>Humidity</b>	10 to 85% RH
<b>Acoustic: Sound Pressure (Typ/Max)</b>	26/46 dBA
<b>Acoustic: Sound Power (Typ/Max)</b>	36/55 dBA
<b>Transportation /Storage Condition</b>	
<b>Temperature</b>	-40-70°C (-40-158°F)
<b>Humidity</b>	5 to 95%RH
<b>Altitude</b>	4570m (15000 ft)
<b>Regulatory Compliance</b>	
<b>Safety</b>	<ul style="list-style-type: none"> <li>UL 60950-1</li> <li>CAN/CSA C22.2 No. 60950-1</li> <li>EN 60950-1</li> <li>AS/NZS 60950-1</li> <li>IEC 60950-1</li> </ul>

<p><b>EMC</b></p>	<p>47 CFR, Part 15  ICES-003 Class A  EN55022 Class A  CISPR22 Class A  AS/NZS 3548 Class A  VCCI V-3  CNS 13438  EN 300-386  EN 61000 (Immunity)  EN 55024, CISPR 24  EN50082-1</p>
<p><b>Telecom</b></p>	<p>TIA/EIA/IS-968  CS-03  ANSI T1.101  ITU-T G.823, G.824  IEEE 802.3  RTTE Directive</p>



## CISCO ROUTERS 1941 SERIES BASIC ORDERING INFORMATION

Product Number	Product Description
<a href="#">CISCO1941/K9</a>	Cisco 1941 Router w/2 GE,2 EHWIC slots,256MB CF,512MB DRAM, IP Base
<a href="#">C1941-SEC-SRE/K9</a>	Cisco 1941 SRE Bundle, SRE 300, SEC Lic. PAK
<a href="#">CISCO1941-SEC/K9</a>	Cisco 1941 Security Bundle w/SEC license PAK
<a href="#">CISCO1941W-A/K9</a>	Cisco 1941 Router w/ 802.11 a/b/g/n FCC Compliant WLAN ISM
<a href="#">CISCO1941W-E/K9</a>	Cisco 1941 Router w/ 802.11 a/b/g/n ETSI Compliant WLAN ISM
<a href="#">CISCO1941W-P/K9</a>	Cisco 1941 Router w/ 802.11 a/b/g/n Japan Compliant WLAN ISM
<a href="#">CISCO1941W-N/K9</a>	Cisco 1941 Router w/802.11 a/b/g/n Aus,NZ Compliant WLAN ISM
<a href="#">CISCO1941-2.5G/K9</a>	Cisco 1941 with 2.5G DRAM, 256MB Flash
<a href="#">1941-2901-FANBLWR</a>	Cisco 1900 Series Option & Spare 1941-2901-FANBLWR
<a href="#">ACS-1941-RM-19</a>	Cisco 1900 Series Option & Spare ACS-1941-RM-19
<a href="#">C1-CISCO1941/K9</a>	Cisco ONE - ISR 1941
<a href="#">MEM-1900-2GB</a>	Cisco Memory MEM-1900-2GB
<a href="#">MEM-1900-1GB</a>	Cisco Memory MEM-1900-1GB
<a href="#">MEM-1900-512MB</a>	Cisco Memory MEM-1900-512MB
<a href="#">MEM-1900-512U2.5GB</a>	Cisco Memory MEM-1900-512U2.5GB
<a href="#">MEM-1900-512U1.5GB</a>	Cisco Memory MEM-1900-512U1.5GB
<a href="#">MEM-1900-512U1GB</a>	Cisco Memory MEM-1900-512U1GB
<a href="#">MEM-CF-4GB</a>	Cisco Memory MEM-CF-4GB
<a href="#">MEM-CF-2GB</a>	Cisco Memory MEM-CF-2GB
<a href="#">MEM-CF-1GB</a>	Cisco Memory MEM-CF-1GB
<a href="#">MEM-CF-512MB</a>	Cisco Memory MEM-CF-512MB
<a href="#">MEM-CF-256MB</a>	Cisco Memory MEM-CF-256MB
<a href="#">MEM-CF-256U2GB</a>	Cisco Memory MEM-CF-256U2GB
<a href="#">MEM-CF-256U1GB</a>	Cisco Memory MEM-CF-256U1GB
<a href="#">MEM-CF-256U512MB</a>	Cisco Memory MEM-CF-256U512MB

## ADDITIONAL INFORMATION

[Guide to Select New Cisco Routers](#)

[Guide to Upgrade Your ISR G1 and ISR G2 Routers to ISR 4000](#)

[Cisco ISR 4451-X vs. ISR 3900 vs. ISR 2900 vs. ISR 1900](#)

## WHERE TO BUY

**Want to buy this series of products? please contact:**

- Tel: +1-626-239-8066 (USA)/ +852-3050-1066 / +852-3174-6166
- Fax: +852-3050-1066 (Hong Kong)
- Email: [sales@router-switch.com](mailto:sales@router-switch.com) (Sales Inquiries)

**Or visit:** [Cisco ISR 1941 Series Routers](#)

### About us

Router-switch.com, founded in 2002, is one of the biggest Global Network Hardware Supplier. We are a leading provider of network products with 14,500+ customers in over 200 countries. We provide original new and used network equipments (Cisco, Huawei, HPE, Dell, Hikvision, Juniper, EMC, etc.), including Routers, Switches, Servers, Storage, Telepresence and Videoconferencing, IP Phones, Firewalls, Wireless APs & Controllers, EHWIC/HWIC/VWIC Cards, SFPs, Memory & Flash, Hard Disk, Cables, and all kinds of network solutions related products.

## SOURCES

[https://www.cisco.com/c/en/us/products/collateral/routers/1900-series-integrated-services-routers-isr/data\\_sheet\\_c78\\_556319.html](https://www.cisco.com/c/en/us/products/collateral/routers/1900-series-integrated-services-routers-isr/data_sheet_c78_556319.html)